

# Case Studies for Insurance Agents

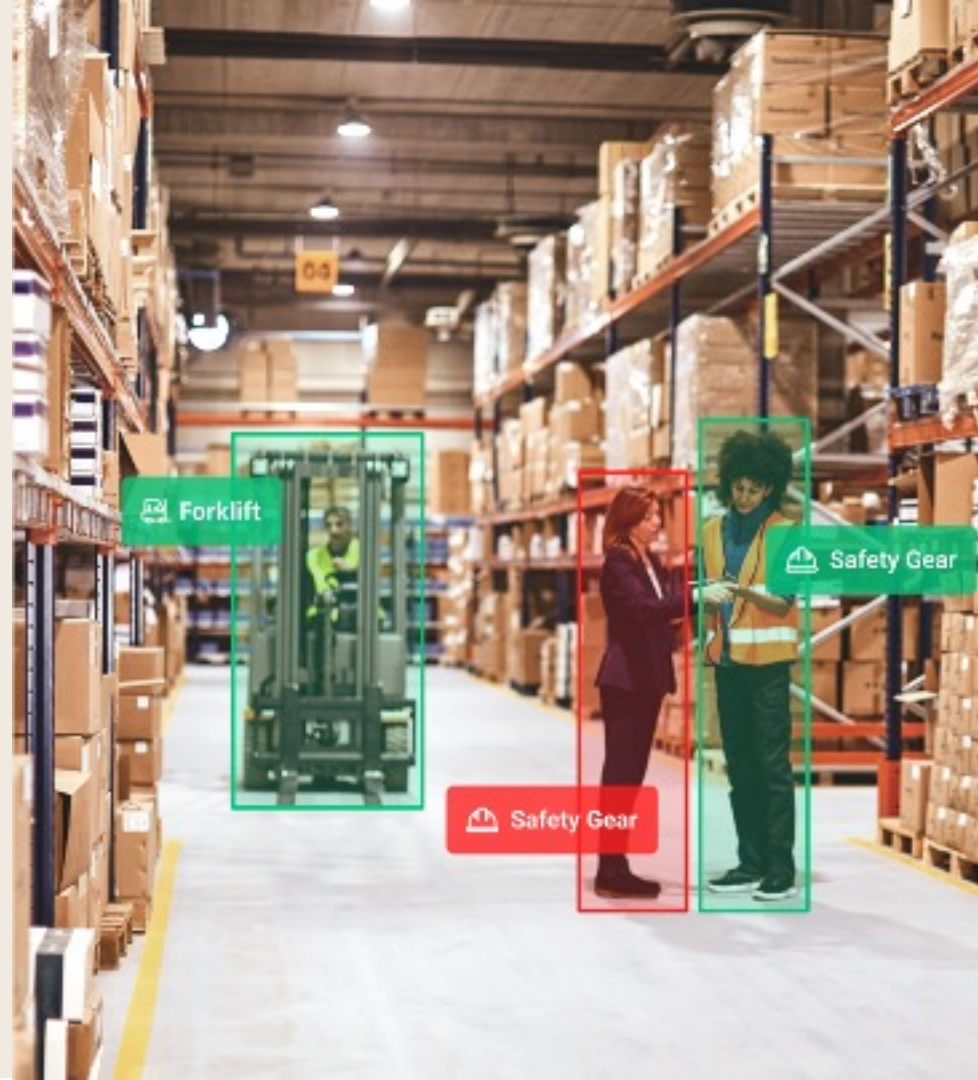
## Lowering Risk with Video Analytics for Policyholders

CompScience



Introducing a Workers' Comp Program that can reduce accidents and lower insurance costs.

Learn how it works, review case studies, then visit [CompScience.com](https://www.compscience.com) to take the next step.



## How It Works

Our system generates proprietary risk factors from 50+ behavioral and environmental hazard detectors.

**1**

Share existing video footage from your facility



**2**

Apply artificial intelligence to detect hazards



**3**

Make changes to prevent accidents and reduce losses



# The types of risks that our system can detect



## Human Behavior

- Ergonomics risks
- Behavioral Compliance
- Zone Compliance
- Pedestrian Walkways



## Powered Equipment

- Layout
- Near Misses and Collisions
- Exclusion Zones
- Forklift Operation
- People / Machinery distance



## Property & Product

- Product Mishandling
- Falling Cargo
- Collisions

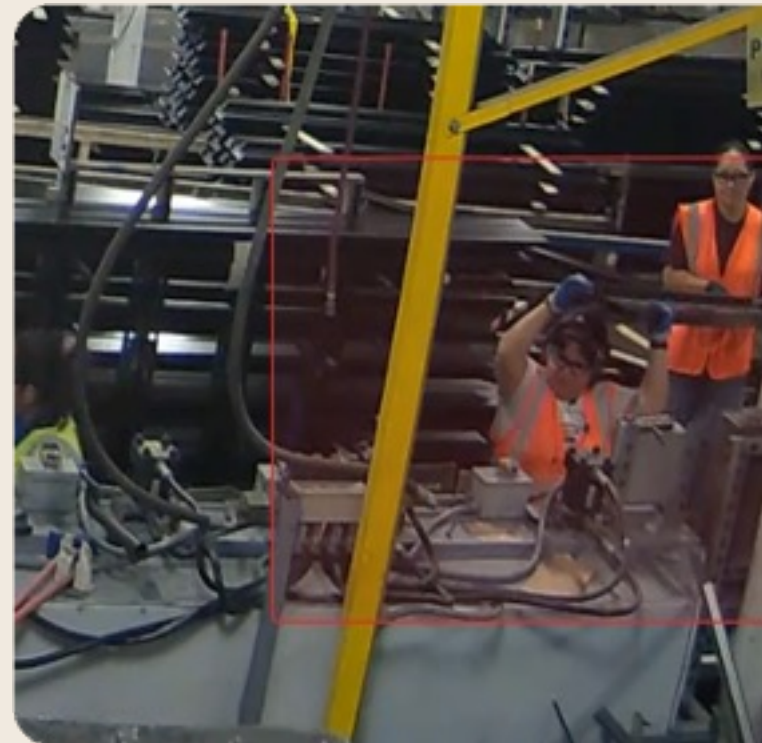
## Case Studies

# Workflow improvements led to 95% reductions in lifting exposure

“It was such a simple solution that employees liked. It was something that was never really complained about, and we didn’t necessarily have an incident from it, but after employees tried it, they opened up about how heavy the frames get and how tired they can be after handling them. So all and all it was a success owed to CompScience!!!” *Safety/Environmental Manager*

Interventions: Ergonomics trainings and new material transport systems

**Solution: Client introduced dollies as a result of our findings around high numbers of overhead lifts occurring in their facility.**



## Case Studies

# Coaching and machinery upgrades led to a 99% reduction in exposure

Detected 570 jumping/climbing events over a two-week period at the onset of the pilot.

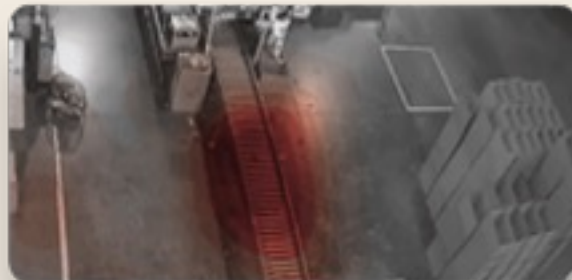
Upon completion of the pilot, detected just 2 jumping/climbing incidents over two-week period.

Analytics showed that 80% of jumping/climbing incidents happened in the same location.

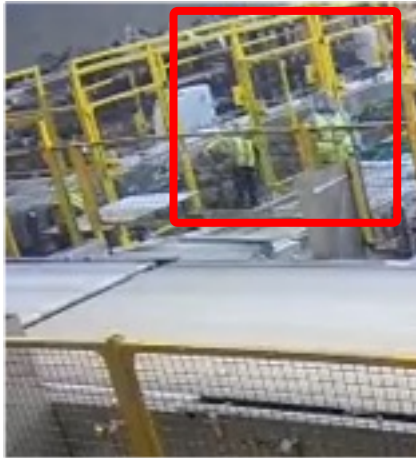
**Solution? The client installed a lift gate.**



Policy	Period 1 6/21-7/2	Period 2 7/19-8/1	Period 3 8/2-8/15	Period 4 9/6-9/19	Period 5 10/4-10/17	Period 6 11/20-12/3
Jumping / Climbing	570 <small>total incidents</small>	288 <small>total incidents</small>	31 <small>total incidents</small>	5 <small>total incidents</small>	5 <small>total incidents</small>	2 <small>total incidents</small>



# Training and workflow improvements led to 32% decrease in waist bends



Employees were continuously cleaning and sweeping debris of product pieces.

Broken insulation on the facility floor and machines also contributed to slip and fall accidents, machine interference, increased dust and lowered morale.

### Forces Involved

- Forward bends of various degrees
- Twisting with reach to gather material

## ▶ Ergonomics

# 8.9k

### Ergonomic events detected

CompScience tracks a variety of worker-related activity, specifically their ergonomic movements. This number is the sum of those ergonomic events.

# 28

### Ergonomic events per worker hour

In one total hour of worker activity detected, this is the number of ergonomic events expected to occur.

Policy	Period 1 9/12/2021 - 9/25/2021	Period 2 12/01/2021 - 12/14/2021
Waist Bends	36.8 <small>Incidents per worker hour</small>	24.9 <small>Incidents per worker hour</small>
Overhead Lifts	2.76 <small>Incidents per worker hour</small>	2.5 <small>Incidents per worker hour</small>
Squatting	0.57 <small>Incidents per worker hour</small>	0.14 <small>Incidents per worker hour</small>

Note: Events / worker hour normalizes for the total amount of worker activity detected, which adjusts for busy periods.

### Insights

- **32% decrease** in waist bends per hour of worker activity detected from period 1 to period 2

**Solution: Ergonomics training and a new industrial vacuum system**

## Case Studies

# Training and workflow improvements led to 59% and 95% improvements in high risk postures for two clients

Claims history included a series of losses related to overexertion and bodily reaction being the most frequency category.

Observed elevated ergonomic risks associated with manufacturing and material movement.

**Solution for one client: purchase of A line table as a result of our findings proved highly effective.**

Waist Bends	11,997	4,880	59%
	incidents	incidents	decrease

CompScience detected that plant employees bending over at a rate of 75 events / worker hour. We shared with the client exactly what their greatest risk was on each monitored assembly line.





Ready to take the next step and become an agent?

[Visit CompScience.com](https://www.compscience.com)

CompScience

